

VOTES

Annual School Election

April 21



Southern Regional High School District
105 Cedar Bridge Road
Manahawkin, NJ 08050

Non-Profit Org.
U.S. Postage
PAID
Manahawkin, NJ 08050
Permit No. 34

Postal Patron

SOUTHERN LIGHTS
The Official Newsletter of Southern Regional High School District

Vol. 52 No. 3

Southern Lights

April 2009



Theatre Company Celebrates its 25th Anniversary!

The theatre company recently celebrated its 25th Anniversary with sold-out productions of the family favorite *Annie*. Over 95 students, grades 7 through 12 and staff members worked

after school hours combining their skills in the areas of singing, dancing, acting, orchestration, costuming, lighting, sound, set design, set construction and ticket sales to produce the annual musical. The theatre company has a long history of quality performances and is proud to have just celebrated its 25th Anniversary. The following cast members were involved in this year's production: Carly Nelson, Louis Baglio, Elizabeth Weindonhof, Filomena Bongi, Evan Washburn, Chris Pickel, Natalie Reale, Katie Orlando, Julia Kuti, Natalie Jones, Marlena Mignano, Daniel Paco, Madison Ernst, Karyn Gregory, Hannah DeGenova, Taylor Sprague, Jasmine Rivera, Tarah Trebino, Victoria Sidharkas, Taryn Kalsch, Melinda Gioe, Kara Bilgrav, Taylor Sprague, Denise Mednilla, Hope Pinter, Carly Moses, Sarah Levine, Corey Smith, Kim Vogel, Michelle Lombarski, Katie Orlando, Charlie Monanian, Michael Rackett, Natalie Jones, Rob Jones, Taj Harvey, Dylan Brierly, Ricky Travato, Kyle Muldowney, Nick Bernard, Jake Ongsiano, Dylan Kozen, Jen Chrzanowski, Amanda Bonfonti, Rachel Marino, Lydia Johnson, Lindsey Vanderbrook, Emily DeBiase and Brody Baker.

DISTRICT ADMINISTRATION

Craig Henry,
Superintendent
Daniel MacPhee,
Assistant Superintendent
Lynn E. Shugars,
Business Administrator/Board Secretary

NEWSLETTER

Carolyn S. Placa,
Editor

2009-2010 School Budget 1.9 Million Dollar Reduction

Southern Regional's proposed budget was developed with sensitivity to the current economic conditions that we are all presently experiencing. From the outset, the Board of Education's goal was to present a budget that would provide tax relief. The proposed 2009-2010 budget represents a 1.9 million dollar reduction compared to the current 2008-2009 budget. This was accomplished despite the 2% reduction of New Jersey State Aid. The net result was an overall decrease to the Tax Levy portion of the budget.

Cost cutting measures have been implemented in the areas of: administration, special education out-of-district placements, support services, supplies and materials, athletics and co-curricular activities. Although no academic or athletic programs currently being offered will be eliminated, no new programs are proposed within the 2009-2010 budget. Additionally, the District's ongoing efforts to conserve energy consumption have not only received national recognition, but have contributed towards the ability to reduce operational costs. The District is also actively working with the local elementary school districts in developing shared-services opportunities designed to optimize efficiencies and reduce costs.

Southern's commitment to providing a preeminent educational experience is unwavering. The District understands with clarity one of the fundamental tenets of its Strategic Plan, "the responsibility to be a good steward of the financial resources provided by the community." The 2009-2010 budget has been developed with that premise keenly in mind.

Japanese Students Partner with Southern Regional

On March 12-26th, twenty Japanese students and two chaperones arrived from Sosa Senior High School in Chiba Prefecture, Japan. In a strong and valued partnership, Sosa is Southern's only sister school dating back to 1994.

Japanese students were hosted by students and teachers of Southern Regional. "Over many years of hosting students, it has always proved to be a very rewarding experience for the hosts and their families. It often produces friend-



Southern Regional hosts Japanese exchange students from their sister school Sosa Senior High School in Chiba Prefecture, Japan.

ships that are long-lasting," said Mr. Tom Garneau, Japanese teacher.

Japanese students participated in a number of school activities such as: an orientation breakfast, following their host students' class schedules, visiting with the Middle School MaxTAP students, and participating in a dinner where cultural demonstrations and entertainment was shared.

In addition, the Japanese students participated in an LBI Rotary meeting and provided origami demonstrations to the elementary students of the LBI and Beach Haven Schools. They toured Long Beach Island, the Old Barney Lighthouse, The LBI Foundation of the Arts and Sciences, Ellis Island and the Statue of Liberty.

In This Issue

2008-2009 Budget Information	2-3
Community Connection	3
SOCH Instructional Series	
Southern Regional Adult School	
LBI Foundation of the Arts	
Scholarship Kick-Off	
Veterans' Remembrance Day	
Musical Notes	4
Did You Know?	4
MaxTap Exhibit	4
Awards	4
Sports Corner	4

2009-2010 Southern Regional School District Budget

RESOLVED, that there should be raised for the General Funds \$36,735,660 for the ensuing school year.

The statement above is what you will see in the voting booth or on the sample ballot during the upcoming school election on April 21st. What does this statement mean?

The "General Fund" is the main operating fund for the district. Day to day expenses and operations are funded and tracked in this fund: everything from salaries, benefits, textbooks, electricity and fuel for the busses. The question that is posed to the voters in the voting booth asks for approval of the tax levy needed to fund the General Fund - or in other words - the day to day operations of the school district. There are two other funds that are also part of a school district budget: the Special Revenue Fund, for the tracking of federal and state grant dollars, and the Debt Service Fund, for the payment of debt from previously approved bond referendums.

During these very difficult economic times, the District's goal is to cut costs, minimizing the impact on tax payers. **The overall 2009-2010 budget is \$1,956,318 less than the 2008-2009 budget. The overall Tax Levy (General Fund and Debt Service Fund combined) is \$464,826 less than the 2008-2009 budget.** This resulted in tax savings for the averaged assessed home in five out of the seven District's constituent municipalities. Two municipalities - Beach Haven and Ship Bottom

have a tax increase due to a significant shift in their 'municipal share' of the Tax Levy. The State of New Jersey annually determines the municipal share of each constituent municipality. Slight shifts in elementary or regional enrollments can have a significant impact on each town's Tax Levy share, even in a year such as this one when the District is decreasing the overall Tax Levy.

Southern Regional School District continues to provide a comprehensive and diverse academic program that results in 87% of Southern graduates attending college after graduation. Southern's High School Proficiency Assessment scores are above state average and in the top three in Ocean County. Southern has also implemented an in-district Autism Program that provides a superior educational setting and opportunities for autistic children at a considerable savings to the District. Southern also continues to provide an adult diploma program - one of only two remaining in Ocean County. In addition, Southern's extracurricular and athletic programs serve thousands of its students.

Please take time to review the information below. Additional information is provided on the Southern Regional School District website www.srsd.net or by contacting the Superintendent's Office at (609) 597-9481.

Questions and Answers

How many budgets am I voting on? TWO!!

On each sample ballot and in each voting booth you will find a budget question for Southern Regional. You will also find a budget question for your community's elementary district: Long Beach Island Consolidated, Beach Haven or Stafford Township. Please be sure to consider each question carefully and vote on both the REGIONAL school district budget and the ELEMENTARY school district budget.

How is the rate and municipal share of each constituent district determined?

This is the result of a rather complicated state formula which annually allocates shares of the regional district for tax purposes. It should be noted that the STATE DEPARTMENT OF EDUCATION and NOT the Southern Regional School District calculates the regional apportionment formula. The regional apportionment formula takes two factors into consideration: equalized real estate valuations and the total elementary and high school enrollment in each community. Small changes in enrollment may cause dramatic shifts in the tax burden. The "Percent Share by Town" chart shows how the municipal share has fluctuated over the past five budget years.

PERCENTAGE SHARE BY TOWN

Municipality	2005-06	2006-07	2007-08	2008-09	2009-10
Barnegat Light	6.17%	6.26%	6.34%	6.09%	6.28%
Beach Haven	10.26%	10.35%	10.77%	10.97%	10.84%
Harvey Cedars	6.58%	7.37%	6.21%	5.98%	5.99%
Long Beach Twp.	41.54%	40.54%	39.56%	39.72%	39.56%
Ship Bottom	6.94%	6.72%	6.61%	6.43%	6.73%
Surf City	8.93%	9.06%	9.72%	9.37%	8.93%
Stafford	19.58%	19.70%	20.78%	21.43%	21.67%

What is the tax impact of the proposed budget?

Tax impact varies among constituent districts and overall, the tax levy supporting the budget will be **decreasing** by \$464,826. The "Tax Levy Comparison" chart shows the tax impact in each constituent district.

TAX LEVY COMPARISON

Municipality	2008-2009			2009-2010		
	Levy	% Share	Rate Per \$100	Levy	% Share	Rate Per \$100
Barnegat Light	2,292,503.75	6.09	0.224	2,448,612.97	6.28	0.228
Beach Haven	4,499,285.60	10.97	0.265	4,225,242.82	10.84	0.259
Harvey Cedars	2,443,850.05	5.98	0.172	2,335,276.30	5.99	0.171
Long Beach Twp.	15,505,458.78	39.72	0.212	15,425,391.12	39.56	0.209
Ship Bottom	2,551,301.01	6.43	0.232	2,624,054.53	6.73	0.241
Surf City	3,742,190.11	9.37	0.245	3,485,239.49	8.93	0.245
Stafford	8,425,543.70	21.43	0.197	8,451,489.77	21.67	0.197

For more budget information visit www.srsd.net.

How does Southern Regional fund its budget?

The "Revenue" chart below shows where Southern gets the funding to support the budget. The district continues to receive little State aid in support of the budget.

REVENUES

	2009-2010	% of Budget
General Fund		
Budgeted Fund Balance	\$4,234,564	7.64%
Local Tax Levy	\$36,735,660	66.29%
Tuition	\$7,305,051	13.18%
Transportation Fees	\$675,000	1.22%
Unrestricted Misc. Revenues	\$304,003	0.55%
State Aid	\$3,100,075	5.59%
Total General Fund	\$52,354,353	94.47%
Special Revenue Fund		
State Grants	\$ 7,673	0.01%
Federal Grants	\$797,170	1.44%
Total Special Revenue Fund	\$804,843	1.45%
Debt Service Fund		
Budgeted Fund Balance	\$178	0.00%
Local Tax Levy	\$2,259,647	4.08%
Total Debt Service Fund	\$2,259,825	4.08%
TOTAL BUDGET	\$55,419,021	

APPROPRIATIONS

General Fund		
Fund 11 (General Operating)	\$50,839,564	91.74%
Fund 12 (Capital Outlay)	\$1,052,720	1.90%
Fund 13 (Special Schools)	\$462,069	0.83%
Total General Fund	\$52,354,353	94.47%
Special Revenue Fund		
State Grants	\$7,673	0.01%
Federal Grants	\$797,170	1.44%
Total Special Revenue Fund	\$804,843	1.45%
Debt Service Fund		
Payment of Principal	\$1,680,000	3.03%
Payment of Interest	\$579,825	1.05%
Total Debt Service Fund	\$2,259,825	4.08%
TOTAL BUDGET	\$55,419,021	

Southern Regional Presents...

A Day in the Life of a Southern Regional Student

This program will showcase various classes and activities that take place at Southern Regional School District.

Tune into SNN, Channel 21 for broadcast times.

WHERE DO YOU VOTE?

STAFFORD TOWNSHIP

DISTRICT #1 & #15

Stafford Township Fire Company #1
133 Stafford Avenue

DISTRICT #2 & #17

Saint Mary's Parish Center
179 South Main Street

DISTRICT #3 & #4

Stafford Township Community Center
1199 Mill Creek Road

DISTRICT #5

Fawn Lakes Community Center
6 Sycamore Road

DISTRICT #6, #8, #9, & #12

Ocean Acres Community Center
489 Nautilus Drive

DISTRICT #7, #10, #11, & #19

Ocean Acres Elementary School
Multi-Purpose Room
489 Nautilus Drive

DISTRICT #13

Jennings Road Recreation Center
385 Jennings Road

DISTRICT #14

Atlantic Hills Clubhouse
98 Atlantic Hills Boulevard

DISTRICT #16

Perry's Lake Clubhouse
4 Princeton Drive

DISTRICT #18

Marine Academy of Technology & Environmental Science Center
195 Cedar Bridge Road

LONG BEACH ISLAND

Long Beach Twp. Public Safety Building
Brant Beach

First United Methodist Church
Beach & New Jersey Avenues
Beach Haven Terrace

Long Beach Island Art Foundation
120 Long Beach Boulevard, Loveladies

Barnegat Light Fire House
Barnegat Light

Harvey Cedars Municipal Building
Harvey Cedars

Ship Bottom Borough Hall
Ship Bottom

Surf City Fire House
Surf City

Beach Haven Town Hall
300 Engleside Avenue, Beach Haven

VOTING HOURS

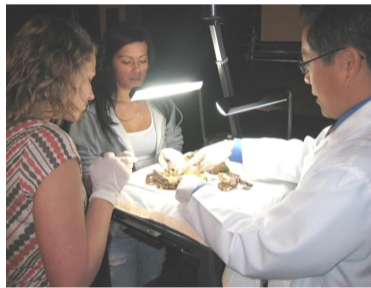
1:00 PM – 9:00 PM

SOCH's Instructional Series

Southern Ocean County Hospital presented the last "instructional series" in March. Over 100 students, who are enrolled in the academic science elective, participated in each of these medical lectures. "It is exciting to talk to young people about heart disease. You only get one heart and what you do now is affecting that heart," stated Dr. Orlando, Director of the Cardio Catheterization Lab.

For the second year, several SOCH physicians from various specialties such as internal medicine, oncology and orthopedic surgery, instructed advanced anatomy and physiology classes. Video projections, medical equipment and human organs were included in some presentations. A question and answer session concluded each lecture, allowing students to interact directly with the physicians who are experts in their respective fields. "During the lecture, students asked impressive questions. A majority of the kids don't know what to do when they grow up. This exposure makes a difference in a kid's life and there is nothing better than that," stated Dr. Paul Chung, Oncologist.

The partnership with SOCH also includes the Center for Health Sciences, where students observe orthopedic surgery in the operating room.



Students touched human organs while Dr. Paul Chung explained the different parts.

Southern Regional Adult School

The Southern Regional Adult School continues to provide a full range of evening instructional programs. Besides offering GED (General Education Development) and ESL (English as a Second Language) programs in partnership with St. Francis Family Services through the Ocean County Adult Education Grant, Southern Regional Adult School offers a full credit Adult High School Program. This valuable opportunity for students who have dropped out of regular high school offers an essential "second-chance" learning opportunity in our area. The Adult School principal, Mr. Jan P. Kristbergs, said the value of the program is exemplified by this student's statement: "The Adult School means a lot to me. I appreciate all the teachers because they make me feel like I can succeed. My confidence has grown and now I know that I can do something if I put my mind to it!"

Art Exhibit at LBI Foundation

The Art Exhibit for 7th–12th grade students opened at LBI Foundation of the Arts on March 12th and ran until April 2nd. Fine art, pottery, print making, painting and mixed media were displayed in this professional gallery.



Drawing by Laurel Rutter.



Scholarship Kick-Off

Southern Regional's Scholarship Program held its annual kick-off breakfast on March 12th. Last June, the Class of 2008 was presented with \$518,065 from local individuals and businesses. As a result, 832 scholarships were awarded to senior students. Scholarship awards throughout the years have enabled students to attend prestigious colleges and universities while also providing help to students who desire to attend local colleges, technical and trade schools. Joining this year's donors were former scholarship recipients Nicole Gargano, Class of 2003 and Tiana Kennedy, Class of 2003. They expressed their gratitude to the donors and related how important their scholarships were to their lives. "As important it is to give, it is even more important to give back. I'm forever grateful to the community for the scholarships I received," said Tianna Kennedy.

If you are interested in becoming a donor please contact Cheryl Barrett at 609-597-9481.

AMERICAN CANCER SOCIETY RELAY FOR LIFE

SOUTHERN REGIONAL
MAY 29 & 30, 2009

1-800-ACS-2345



Displays were created by 8th grader Russell Ridsen for Veterans Remembrance Day.

Veterans' Remembrance Day

On March 13th the Middle School hosted Veterans' Remembrance Day. Veterans from

World War II through the Vietnam War shared their stories and displays included uniforms, pictures and various war memorabilia. Following the school day presentations, the school's History Club enjoyed some time with the veterans. In preparation for the day's events, students were given a brief lecture on the history of World War II through the Vietnam War. Clair Chapter, social studies teacher, along with Russell Ridsen, an eighth grade student and war historian, were in charge of organizing the event. This activity helped students gain a better appreciation of the sacrifices these men made for the freedom we share today.



Veterans share their story with Middle School students.

COMEDY NIGHT

Fundraiser to benefit the
The Southern Regional Alumni Association
&
Southern Regional Education Foundation

ALUMNI  

Friday May 1st at the Holiday Inn, RT 72, Manahawkin
Featuring...DINNER AT 6:30PM
DOORS AT 8PM – SHOW AT 9PM

3 TOP COMEDIANS





Rob Eppel
Master of Ceremonies

Doug Karpf
Headliner

Andy Hayward
Opening Comedian

TICKETS ON SALE NOW!

\$25 pp SHOW ONLY IN ADVANCE \$30/pp AT THE DOOR
\$40 pp DINNER & SHOW AT THE STAFFORD RESTAURANT
RESERVATIONS REQUIRED FOR DINNER AND SHOW PKG

CALL THE HOLIDAY INN AT 609-481-6115
FOR RESERVATIONS - CREDIT CARDS ACCEPTED MC VISA AMEX
SHOW TICKETS AVAILABLE AT SOUTHERN REGIONAL HS
11-12 OFFICE DURING SCHOOL HOURS
CALL 609-709-1651 for more information

Musical Notes

- The LBI Sixth Grade Band and the Middle School Band One students performed for each other on March 19th.
- The Wind Ensemble, under the direction of Mr. Kevin Moninghoff, captured 2nd Place in the Region 3 Concert Band Festival at Rowan University.
- On April 2nd, the Middle School Jazz Band and Chorus performed for the LBI School. This event showcased the various musical programs students can join when they enter Southern Regional.
- The beginning strings' students from both the Middle School and Stafford Schools will be in a concert at the STAC on April 21st at 6:30 pm. Southern and Stafford have a Shared Service Strings Program.
- The High School Band students have partnered with students from Stafford McKinley School for an instrumental music outreach program. Eleven Southern students played side by side at a winter concert at the Ocean First Theatre.



Southern and Stafford students share in a music outreach program.

Did You Know?

- Every Southern Regional student, teacher and staff member participated in the 12th Annual Read Across America Day. The nationwide event was held in celebration of Dr. Seuss' birthday and the joy of reading.
- On March 28th the National Honor Society hosted a rummage sale in the student parking lot that raised \$900 for the Ocean County Challenger League. Leftover toys and clothing were donated to the Stafford School District.
- S.T.Y.L.E. students took a trip to Stafford to assist in celebrating Read Across America Day. Students read out-loud to various elementary classes.
- As part of the state-wide program called Trout in the Classroom, Mr. Jason Hoch and his students are raising Brook Trout. This cold water conservation program teaches kids about the importance of keeping their watershed clean.

- The Michael Lorenzi Philanthropic Fund raised \$1,623 during a "live" televised telethon. Students and volunteers helped answer phone lines, which were routed into a neighboring classroom, while interviews and entertainment were broadcasted from the auditorium stage.
- The March Madness 3-on-3 Basketball Tournament hosted by the Alumni Association raised \$625 for scholarships.
- The Tiger Den Cub Scout Pack 42 of Waretown visited the SNN studio on March 30th. For one of their achievement patches, they needed to visit a place that dealt with mass communication.
- Southern Regional's Knitting for Peace Club has joined the National Organization, "Warm-Up America." Drop off 7x9" knitted or crocheted squares during the month of April in the Warm-Up America boxes in any of the school's main offices or send to Mrs. Colleen Neil in the 9/10 building. These squares will be used to assemble blankets which will be donated locally and registered with Warm-Up America. If you'd like to learn to knit or crochet stop by the 9/10 library at 2:30 pm on Thursdays. For more information, visit <http://www.warmupamerica.com/patterns.html>
- The County Board of Elections trained over twenty Southern students to become election workers. Students learned how to process voters, operate and set-up the voting machines and complete a number of election procedures. This is the second year the training has taken place at Southern Regional High School.
- HSPA testing concluded March 12th and incorporated 43 testing sites for 530 students. Staff and student attendance was exceptional. Staff examiners had perfect attendance while students had 98.5% attendance for the math portion and 99.5% for the language arts.
- Key Club members volunteered to help Stafford's Oxycocus Elementary School students with reading and organizational skills.

Special Education PTA fundraiser to benefit their scholarship fund.
Sweet Jenny's
April 26th 4-8 pm

MaxTAP Exhibit
The Middle School MaxTAP Program presented an Art Exhibit in the Middle School Media Center. Students shared the results of their exploration of American art and artists through the creation of their own work. Projects ranged from traditional paintings and photography to abstract sculpture, computer animation and claymation, filmmaking, stained glass, poetry, dance, and even a spirited ram sculpted of recycled electronic bits and pieces. Parents, students, and friends gathered for the exhibit, which was opened to students and teachers the following day. Mrs. Kmosko, MaxTAP teacher stated, "It was truly a joy to see my students take pride in their own expressive works of art at the conclusion of their study."

Southern Regional Adult School has tickets available for the following trips:

Billy Elliot Broadway Show
Sat. April 25, 2009 2:00 pm show time
\$142/pp (orchestra seats)

"Behold the Lamb"
Sight & Sound Theater (show/buffet lunch)
Thurs. May 7, 2009 \$95/pp

Museum of Natural History NY
Sat. May 16, 2009 \$30/pp (bus only)

Mamma Mia Broadway Show
Sat. May 30, 2009 2:00 pm show time
\$99/pp (orchestra seats)

For more information or reservations, please call: (609) 597-9481, ext. 4410.

Awards

- ◆ Southern Regional received the Sal Abitanta Exemplary High School Health and Physical Education Award from the New Jersey Association for Health, Physical Education, Recreation and Dance. This award recognizes outstanding high school health and physical education programs, which meets the highest standards in professional programming and provides a model that can be duplicated by other school districts throughout New Jersey.
- ◆ Students returned from the FCCLA State Convention with the following awards: Dan Hirrel-silver medal Bread Basics; Kelsey Daniels-silver medal Cake Decorating; Paula Solis and Lauren Miri-silver medals Chapter Service display; Julia Harth and Jessica Paternoster-2nd place gold medal Story Book Ethics; Arielle Ford-bronze medal Fashion Runway Evening Wear; Caitlin McMenamin-silver medal Fashion Runway Evening Wear; Louisa Befumo and Leanna Schwartz-silver medal Fashion Runway Sportswear; Kristyn Vrabel-4th place gold medal Fashion Runway Business Attire; Joanne Solis-2nd place gold medal Fashion Runway Businesswear and a \$7,000 four year Scholarship to Centenary College; Alicia Gresko-3rd gold medal for Fashion Runway Eveningwear and a \$5,000 scholarship.
- ◆ Eighth grader, Alexa Demarco has been recognized on the regional level of The Scholastic Writing Awards of 2009, presented by the Alliance of Young Artists & Writers. She earned Gold Key recognition. In 2009, more that 140,000 works were submitted, only 1,300 were chosen for Gold Key recognition.

Sports Corner.....

- ❑ Girls' Track Team won Group IV State Championship, Distance Medley won the National Championship (3rd fastest time in HS history), 4x8 Relay Team won the National Championship (2nd fastest time in HS history).
- ❑ Wrestling Team won South Jersey Group IV State Championships (5th straight year), District 24 Championship (8th straight year), Glenn Carson won the title of State Champion.
- ❑ HS Cheerleading Squad earned 2nd Place at the NJ State Championships and was a finalist at the National High School Cheerleading Championships which was featured on ESPN.